



american society of civil engineers  
university of southern california chapter

# ASCE



# 2012 Annual Report for ASCE Student Organizations

Calendar Year: January 1 – December 31, 2012

University of Southern California



---

TABLE OF CONTENTS

PRESIDENT’S MESSAGE.....4

1. STUDENT ORGANIZATION INFORMATION.....5

    a. ADVISOR INFORMATION.....6

    b. ASCE STUDENT ORGANIZATION OFFICERS.....6

    c. FINANCE.....7

    d. IMPORTANT CONTACTS.....8

2. STUDENT ORGANIZATION GOALS AND OBJECTIVES.....9

3. MEMBERSHIP AND MEETINGS.....14

    a. MEMBERSHIP.....14

    b. STUDENT ORGANIZATION MEETINGS.....15

    c. ASCE SECTION/BRANCH AND OTHER PROFESSIONAL MEETINGS.....22

4. STUDENT ORGANIZATION ACTIVITIES.....23

    a. PARTICIPATION IN STUDENT CONFERENCE AND WSCL.....23

    b. ASCE STUDENT ORGANIZATION HOMEPAGE AND NEWSLETTER.....23

    c. PRESENTATIONS OUTSIDE OF THE ASCE STUDENT ORGANIZATION.....23

    d. PARTICIPATION IN ASCE STUDENT MEAD CONTEST.....23

    e. ASCE SOCIETY LEVEL CIVIL ENGINEERING EVENT.....24

    f. COLLABORATION WITH OTHER STUDENT ORGANIZATIONS.....24

    g. PRACTITIONER & FACULTY TRAINING WORKSHOP.....24

5. ATTACHMENT A – *Membership Lists*.....25

6. ATTACHMENT B – *Sample Meeting Announcements, Programs, Agendas*.....28

7. ATTACHMENT C – *Sample Newsletter and/or Print-out of Online Presence*.....37

8. ATTACHMENT D – *Summary and Highlights of Meetings and Activities*.....40

9. ATTACHMENT E – *Special Projects*.....70

10. ATTACHMENT F – *Financial Statement*.....72

---

## **PRESIDENT'S MESSAGE:**

During the 2012 year, the student chapter of the American Society of Civil Engineers at the University of Southern California continued working towards getting back to the basics as a student organization. In 2009, the Executive Board implemented a 5-year strategic plan, which we are continually working hard to achieve. Much of the 2012 year has been spent towards conference planning, as we have the honor of co-hosting the Pacific South West Conference in April 2013.

USC ASCE had a subpar performance at the Pacific South West Conference in March, placing 13th overall out of 18 universities. Our Concrete Canoe snapped in half midway through the competition during the men's sprints with myself in it. We still managed to get 12th place in canoe however, which we were very proud of. The Steel Bridge team was not disqualified for the first time in 4 years, placing 11th. I really like the direction that our Steel Bridge team is going, and with an underclassman captain hopefully their success and improvement will continue. Unlike last year, everyone had an amazing time bonding in our successes and failures at conference in 2012, which led to an increase in membership for this academic school year.

During the fall of 2012, USC ASCE built on our successes from the previous year. With most of the Executive Board returning from last year we were able to really continue in planning of PSWC 2013 in coordination with Loyola Marymount and Cal Baptist. I would not recommend ever co-hosting again, but it may be an unnecessary evil that we will not be able to avoid the next time hosting comes around. If you are reading this many years from now please contact me and I will help in any way I can.

USC ASCE hosted a general meeting with food once per month throughout the semester, an activity that is continually being improved upon each year. Our members are a valuable asset to our organization, and we would like to be an asset to our members as well, which is why we create opportunities for them to meet members of industry, attend social events, and volunteer at community service events.

USC ASCE will continue to grow as an organization and will be able to work towards the goals in our 5-year strategic plan in the coming months and year. None of this would have been possible without the support of our members, advisors – official and unofficial, the civil engineering department and the Viterbi School of Engineering, to whom we would like to convey our sincere appreciation. I can't believe this will be my last Presidential Message as a student, I hope ASCE gives to you all of the opportunities and memories it has given me.

Sincerely,

Oscar Rivera  
President, USC ASCE

---

**PART I. STUDENT ORGANIZATION INFORMATION**

*Part I of the report asks for objective records regarding the organization's leadership, membership and finances.*

School Name: University of Southern California

ASCE Student Organization Mailing Address: USC – ASCE 3620 Vermont Avenue, Los Angeles, CA 90089

ASCE Student Organization E-mail Address: [uscasce@usc.edu](mailto:uscasce@usc.edu)

ASCE Student Organization web site: [www.uscasce.com](http://www.uscasce.com)

ASCE Student Organization other online site(s): <http://www.facebook.com/#!/group.php?gid=118508871538043>

Month(s) of Officer Elections: April

*(Please print & sign names)*

Report submitted by:

Contents approved by:

\_\_\_\_\_  
(Katie Wilson)  
Secretary of ASCE Student Organization

\_\_\_\_\_  
(Oscar Rivera)  
President of ASCE Student Organization

\_\_\_\_\_  
(Oscar Rivera)  
President of ASCE Student Organization

\_\_\_\_\_  
(Gregg Brandow, P.E.)  
Faculty Advisor

\_\_\_\_\_  
Date

\_\_\_\_\_  
(Julian Garcia, P.E.)  
Practitioner Advisor #1

\_\_\_\_\_  
(Ed Reynolds, P.E.)  
Practitioner Advisor #2

---

## 1. ADVISOR INFORMATION

Faculty Advisor Name:	<u>Prof. Gregg Brandow, P.E.</u>
Faculty Advisor ASCE Member Number:	<u>163115</u>
Faculty Advisor E-mail Address:	<u><a href="mailto:Brandow@usc.edu">Brandow@usc.edu</a></u>
Faculty Advisor Phone Number:	<u>213-740-1040</u>
Faculty Advisor Fax Number:	<u>213-744-1426</u>
Practitioner Advisor #1 Name:	<u>Julian Garcia, P.E.</u>
Practitioner Advisor #1 ASCE Member Number:	<u>356626</u>
Practitioner Advisor #2 Name:	<u>Ed Reynolds, P.E.</u>
Practitioner Advisor #2 ASCE Member Number:	<u>199396</u>

(A Practitioner Advisor is a member of the ASCE Section/Branch in your area who has been appointed by the Section/Branch President to serve as a contact between your ASCE Student Organization and the practitioners in the Section/Branch.)

## 2. ASCE STUDENT ORGANIZATION OFFICERS

The organization's leadership for the calendar year of 2012, listed by dates of office

From: January 2012	To: April 2012
President	<u>Oscar Rivera</u>
Vice President	<u>Theresa Kurth</u>
Secretary	<u>Katie Wilson</u>
Treasurer	<u>Thomaz Paschoal</u>
PSWC Co-Chairs	<u>Thomas Palmieri</u>
	<u>Charlie Tran</u>
Canoe Co-Captains	<u>Jake Hermle</u>
	<u>Erin Khan</u>
Bridge Co-Captains	<u>Thomas Palmieri</u>
	<u>Jhumann Ung</u>
Environmental Co-Captains	<u>Roberta Lau</u>
	<u>Rosa Lau</u>
Historian/Communications Chair	<u>Jake Hermle</u>
Social Co-Chairs	<u>Loay Alsalem</u>

---

Fundraising Chair

Joao DeBarros

Omar Dana

From: April 2012

To: December 2012

President

Oscar Rivera

Vice President

Theresa Kurth

Secretary

Katie Wilson

Treasurer

Thomaz Paschoal

PSWC Chair

Chris Hong

Canoe Co-Captains

Jake Hermle

Erin Khan

Bridge Co-Captains

Thomas Palmieri

Daniel Huang

Justin Zhang

Environmental Co-Captains

Elise Takebayashi

Rosa Lau

Design Team Chair

Sam Levy

Communications Chair

Jennifer Vides

Historian

Davi Corcio-Alvarez

Social Co-Chairs

Loay Alsalem

Joao DeBarros

Fundraising Chair

Omar Dana

Community Service Chair

Estevan Rodriguez

3. FINANCES - Please refer to Appendix F for a Summary Financial Statement

Local Membership dues: \$ 30 per Year

Society-level Membership dues: \$ 0 per Calendar year

Summary for 2012:

Total Income (2012) \$ 8458.00

Total Expenditures (2012) \$ 8276.00

Financial position as of December 31, 2012:

Cash Balance: \$ 182.00

Accounts Receivable: \$ 0.00

Accounts Payable: \$ 300.00

**4. IMPORTANT CONTACTS**

Contact Name	Phone/E-mail	Mailing Address	Comments
Lucio Soibelman	213-740-0608 <a href="mailto:soibelman@usc.edu">soibelman@usc.edu</a>	3620 S. Vermont Ave Los Angeles, CA 90089	Civil Engineering Department Chair
Serge Haddad	323-205-6236 <a href="mailto:Serge.haddad@gmail.com">Serge.haddad@gmail.com</a>	LADWP	Important MLAB resource
Danielle Elkins	213-228-8262 <a href="mailto:Danielle.Elkins@ch2m.com">Danielle.Elkins@ch2m.com</a>	100 Wilshire Blvd. 21 <sup>st</sup> Floor Los Angeles, CA 90017	Ch2M Hill Engineer & Former President of ASCE
Julian Garcia, P.E.	310-508-6183 <a href="mailto:JUGARCIA@dpw.lacounty.gov">JUGARCIA@dpw.lacounty.gov</a>	952 Cypress St. #6 El Segundo, CA 90245	Practitioner Advisor
Paul Garcia	559-916-9141 <a href="mailto:Paulmichael.garcia@gmail.com">Paulmichael.garcia@gmail.com</a>	100 Wilshire Blvd. 21 <sup>st</sup> Floor Los Angeles, CA 90017	CH2MHill MLAB YMF Contact
Lance Hill	213-740-0599 <a href="mailto:lhill@usc.edu">lhill@usc.edu</a>	3620 S. Vermont Ave. Los Angeles, CA 90089	Lab Director
Gregg Brandow, P.E.	213-740-1040 <a href="mailto:brandow@usc.edu">brandow@usc.edu</a>	3620 S. Vermont Ave. Los Angeles, CA 90089	Faculty Advisor
Julia Moye	213-483-4623 <a href="mailto:julia.moye@lacity.org">julia.moye@lacity.org</a>	1149 S. Broadway St. Suite 810 Los Angeles, CA 90015	Civil Engineering Associate
Farzad Naiem, S.E.	213-483-6490 <a href="mailto:farzad@johnmartin.com">farzad@johnmartin.com</a>	1212 S. Flower Street Los Angeles, CA 90015	Serves as a link between USC ASCE and industry sponsors.
Don Sepulveda, P.E.	213-593-8401 <a href="mailto:dsepulveda@hntb.com">dsepulveda@hntb.com</a>	707 Wilshire Blvd Suite 3300 Los Angeles, CA 90017	Provides feedback for student work and organizational publications such as the Annual report.



---

## **PART II. ASCE STUDENT ORGANIZATION GOALS AND OBJECTIVES**

### **Summary statement:**

In the spring of 2009, USC ASCE released its first Five-Year Strategic Plan. This plan outlined the goals for the organization to promote its growth and improve its reputation. The strategic plan was divided into five broad categories: university interaction, branch and section interaction, societal interaction, internal affairs and conference competition. As required by the strategic plan, this portion of the annual report will serve as an opportunity to reflect upon the progress towards the completion of our goals as well as the metrics by which we measure our success. This portion will serve as a stand-alone supplement to the strategic plan and shall be made available to our members via our website. To preserve the continuity between the strategic plan and our annual report, the formatting of this goals and objectives section shall match that of the strategic plan in its categorical division.

### **University Interaction**

The stated goals for university interaction are:

1. *Maintain status as both a University and Viterbi Student Council Recognized Student Organization.*
  - In 2012 USC ASCE maintained its status as a recognized student organization. This included the implementation of the university's new "Involvement Transcript," a web based program that allows organizations to record events and hours so members have an official record of involvement in student organizations.
  - Recognition at the university is a yearly process that will need to be completed again in the fall of 2013.
2. *Send at least one representative to all department events for undergraduate students, specifically those events aimed at student involvement, underclassmen outreach, and faculty or student recognition.*
  - This year USC ASCE was well represented at all department events for undergraduate students. These included the annual Awards and Recognition Dinner and multiple freshmen involvement events.
  - While overall representation was improved at events, the executive board felt that there was room for more joint events between the department and student organizations. The current structure for department events has all of the planning and funding as the sole responsibility of the department. However, planning events such as the Ice Cream Social is one of the stated responsibilities of our social chairs. As such, our goal for 2013 is to plan at least 3 additional events to the standard yearly department social.
3. *Send at least two representatives to all University Admission events, such as Discover USC. These events may be associated with either Undergraduate or Graduate admission. At each of these events, the representatives will bring a display consisting of no less than a poster highlighting USC ASCE's activities and purpose, a piece of the Concrete Canoe and a portion of the Steel Bridge.*
  - As with the department events, USC ASCE members attended all University Admission events. At these events our members gave presentation to potential freshmen with regards to student involvement, time management and the role of ASCE on the lives of its members.

- 
4. *Send at least two representatives to all Viterbi welcome events, such as the Freshman Welcome Luau. The representatives will bring a display (meeting the criteria listed above) to each event.*
    - At this year's Luau 4 officers represented us and reached out to nearly 50 freshmen students. Participation in this event allows our officers to gather contact information, explain about our research and design projects, and to advertise our upcoming events.
  5. *Provide student volunteers for Viterbi events, such as career fairs.*
    - Select Viterbi events in 2012 required volunteers, aside from those serving as representatives, to admission events. USC ASCE was always represented, but we hope to increase our involvement in 2013.
  6. *Plan and sponsor an annual Engineering Week activity for faculty, students and the outside community in support of the Viterbi School of Engineering E-Week program.*
    - In 2012, USC ASCE created and ran two days of activities in conjunction with the activities put on by the Viterbi Student Council. As in years past we developed, funded and implemented a "Tallest Tower" competition, which gave teams of 2-3 students a five-minute time limit to construct towers from wooden skewers and marshmallows. As a part of the "Carnival Day" we ran a concrete bowling alley. Planning has already begun on our Engineering Week events for 2013.
  7. *Actively support all other student organizations, specifically those of the Sonny Astani Department of Civil and Environmental Engineering. These organizations include, but are not limited to, Chi Epsilon, Associated General Contractors and Construction Management Association of America.*
    - Over the past year, USC ASCE members have taken active roles in other student organizations such as USC AGC, EWB-USC, USC Chi Epsilon and USC CMAA. Additionally, in 2012, USC ASCE maintained its relationship with EWB-USC after creating a Memorandum of Understanding between the two organizations in reflection of the Society level relationship in 2009. Our members are still actively involved in providing civil and structural engineering for the 3 current projects of EWB-USC.

### **Branch and Section Interaction**

The stated goals for branch and section interaction are:

1. *Attend all branch student events including, but not limited to, MLAB Student Mixers and the Student Recognition Banquet.*
  - USC ASCE has been represented at many MLAB events in 2012, however some events conflicted with scheduled classes and our students were unable to attend. We hope to plan some joint events with MLAB in 2013.
2. *Send at least one Representative to regular branch meetings.*
  - We did not have at least one representative at all of the regular branch meetings, due to class schedule and involvement issues. In order to increase involvement next year we shall implement an involvement requirement for all USC ASCE officers to attend at least one meeting throughout the year.
3. *Inform practitioner advisors of all meetings and hold one advisor-Executive Board meeting per term.*
  - This year we had better contact with one of our practitioner advisors. He was very helpful in planning the concrete canoe portion of the Pacific South West Conference

---

that we will host in 2013. It was rather difficult to get in touch with our other practitioner advisor.

4. *Hold a minimum of one general meeting per term with representatives from the Metropolitan Los Angeles Branch to inform all members of continuing opportunities in the American Society of Civil Engineers after graduation. Additionally, this meeting should inform general members of branch activities and promote interaction and socialization with young members of MLAB.*
  - USC ASCE did not meet this goal in 2012 largely due to the time crunch at the end of spring semester. For 2013 we hope to hold this meeting immediately after PSWC in the hopes of gaining the most interest and largest member turnout.
5. *Host a minimum of one branch activity per year to promote interaction between the Metropolitan Los Angeles Branch schools. These meetings should be more social in nature to allow members to meet and interact with students from the other MLAB schools.*
  - This goal was achieved this year through the event we held on campus with ASCE Government Relations Director, Brian Pallasch. Many MLAB members attended the event and interacted with USC ASCE members, as well as students from other LA Section schools.

### **Societal Interaction:**

The stated goals for societal interaction are:

1. *Send the maximum number of students to the annual Workshop for Student Chapter Leaders. These students should all be underclassmen who intend to remain involved in USC ASCE through an executive board position. Within 2 years it shall be the goal of the organization to require all Presidents and Secretaries to have attended a Workshop for Student Chapter Leaders prior to their election to office.*
  - In 2012 this goal was not met due to a lack of funding.
2. *Within 2 years, send a minimum of one organization representative to the national conference of the Society. Within a minimum of 5 years, provide and fund for a regular representative to attend each national conference of the Society.*
  - This year USC ASCE budgeted for and sent 6 representatives to Montreal, Canada to attend the ASCE National Conference. Please see the event write up section for a complete review of the trip. We were able to send these students using available university funds, which should enable us to send at least one student in the future as required by the strategic plan. Moreover, current executive board members are already planning on attending the 2013 conference in Charlotte, North Carolina.

### **Internal Affairs:**

For internal affairs, goals were sub-divided into membership goals and social goals. The membership goals are:

1. *Increase membership to 75% of undergraduate class.*
  - In 2012 our membership represented 21% of the total civil engineering undergraduate class. The benchmarks to achieve 75% over the next 2 years require us to increase our membership by 29% of total undergraduates in 2012 to represent a total of 60% of the undergraduate class. As freshmen and sophomores are very underrepresented in our membership, we feel that targeting this group, while maintaining our current membership base of juniors and seniors should allow us to continue this growth.

- 
2. *Increase freshman membership to a minimum of 50% of the incoming freshman class each year.*
    - In 2012 USC ASCE increased our freshmen membership to twelve regularly participating freshmen (in 2011 we had seven). Through the early months of 2013, the USC ASCE executive board will be working to increase the value we provide to freshmen by tailoring several meetings and activities (i.e. resume workshops) towards underclassmen. Furthermore, at the start of the fall 2013 semester, our executive board will seek to have membership in USC ASCE added as extra credit in the required freshmen civil engineering courses.
  3. *Maintain and track graduating alumni, ASCE participation by class and annual retention rate.*
    - From 2011 to 2012 USC ASCE retained 100% of its members from the class of 2013 and 2014. The 2012 executive board views these high retention numbers as an indication of the success and commitments of our student chapter members.
  4. *Maintain annual records of hours spent for each member in ASCE activities.*
    - USC ASCE has kept detailed records of our membership activities through the use of a shared Google spreadsheet that allows all of our executive board to verify the status of our members and their involvement hours. These records allow us to select representative members to attend workshops and conferences.

### **Conference Competition:**

Conference competition can be subdivided, as in the strategic plan, into several respective areas that are representative of the individual design competitions (i.e. concrete canoe, steel bridge, environmental). For the sake of brevity the goals for conference competition have been summarized as follows:

1. *Complete all travel arrangements (i.e. flights, hotel) and pay any necessary deposits prior to the University's Thanksgiving recess.*
  - Travel arrangements were not necessary for this year's conference as USC is co-hosting and we will be driving ourselves to all events.
2. *Through a competitive application process, select at least 40 potential participants prior to the last day of classes of the fall semester.*
  - It has been decided that participants will be chosen based on their participation in event practices rather than in a competitive application process. We feel that if people are guaranteed a spot at PSWC by the end of fall semester, they won't be as enthusiastic with helping out with event preparations. By choosing students based on their participation, we can ensure that students will be more involved in pre-conference activities. Instead of choosing participants prior to the last day of classes of the fall semester, it has been decided to wait until mid February to finalize the roster.
3. *Assign captains to each non-qualifying conference event. Place in the top 5 for each event within 5 years.*
  - In previous years, captains had only been assigned to the concrete canoe, steel bridge, and environmental competitions. This year, in addition to those events, captains have already been assigned to the surveying competition and to the geotechnical competition. Captains for the other engineering events as well as a captain for the sporting events will be chosen at our first general PSWC meeting. These captains will be in charge of coordinating practices, acquiring materials, and reporting progress to the PSWC chairs for their individual events.

- 
4. *Receive national bids for both Steel Bridge and Concrete Canoe within 5 years.*
    - Concrete Canoe had a disappointing year due to lack of leadership and experience. Though we had a canoe to bring to competition (unlike last year), that canoe was unable to hold up for all of the races. However, we still placed 12<sup>th</sup> out of 18 teams. We are working on these issues for 2013 and expect a much better performance.
    - Steel Bridge showed improvement at PSWC 2012 and placed 11<sup>th</sup> out of 18 teams. We expect to build on this success in 2013 by paying more attention to details. Unlike years past, most of the bridge design was completed in the fall of 2012. The bridge team has continued to increase its size by hosting welding practices and design sessions throughout the fall.
  5. *Win the conference title at the Pacific Southwest Regional Conference within 5 years.*
    - In year three of this five year plan, our goal is to make it into the top 5 overall at the Pacific South West Conference. In 2012 USC placed 10<sup>th</sup> overall, one place higher than in 2011. We are going to reach this goal by practicing for each individual event before the competition to an extent that has never been done at USC. In previous years, students haven't even known what events they are participating in up until the week of the competition, this year, students will be chosen to participate in the competition based on the efforts they put in practicing for each individual event. With this simple change in strategy, USC should be able to drastically move up in the final rankings of the competition.

---

### **PART III. STUDENT ORGANIZATION MEMBERSHIP AND MEETINGS**

Part III of the report includes records relating to membership and meetings.

#### **1. MEMBERSHIP**

Is attendance at ASCE Student Organization meetings mandatory?	No
Society-level ASCE Membership is:	Voluntary
Total number of Juniors & Seniors eligible to join ASCE (Number of Jr. & Sr. with CE declared major; average over the year)	135
Total number of Juniors & Seniors in your ASCE Student Organization: (Average over the year)	28
Number of members of your ASCE Student Organization: (Average over the year)	44
Number of ASCE Student Organization members who are Society-level ASCE Student Members:	19
<b><u>Statistical information:</u></b>	
(Total Jr. & Sr. ASCE Student Organization Members) ÷ (Total Jrs. & Srs. Eligible)	0.21
(Total Society-level Student Members) ÷ (Total Local Student Members)	0.43

*Note: Membership lists are in Attachment A.*

**2. ASCE STUDENT ORGANIZATION MEETINGS**

Meetings to which the general membership of the ASCE Student Organization is invited should be recorded here. All meetings reported in this section must be arranged and sponsored by the ASCE Student Organization. Include joint meetings, technical and professional meetings, field trips and social functions.

Activity Date	Activity Type (Use abbreviations below; list all that apply.)	Program (Briefly describe program. Include name of speaker if applicable.)	Attendance				
			Students	Faculty	Faculty Advisor	Practitioner Advisor(s)	Other
1/13 – 1/15	FT	Big Bear Ski Trip	17				
1/15	OP	Concrete Canoe – Concrete Specimen 28 Day Testing	3				
1/17	OP	PSWC Info. Meeting	8				
1/17	OP	Environmental Design Meeting	7				
1/17	OP	Weekly Officers’ Planning Meeting	9				
1/19	OP	Viterbi Involvement Fair	3				
1/20	OP	PSWC Info. Meeting	10				
1/22	FT	Concrete Canoe – Paddling Practice	6				
1/24	OP	Environmental Design Meeting	7				
1/24	OP	Weekly Officers’ Planning Meeting	8				

1/31	OP	Environmental Design Meeting	7				
1/31	OP	Weekly Officers' Planning Meeting	8				
2/7	OP	Environmental Design Meeting	7				
2/7	OP	Weekly Officers' Planning Meeting	9				
2/11	FT	TreePeople Community Service	6				
2/14	OP	Environmental Design Meeting	7				
2/14	OP	Weekly Officers' Planning Meeting	8				
2/19	FT	Concrete Canoe – Paddling Practice	6				
2/21	OP	Environmental Design Meeting	7				
2/21	OP	Weekly Officers' Planning Meeting	8				
2/28	OP	Environmental Design Meeting	7				
2/28	OP	Weekly Officers' Planning Meeting	8				
3/6	OP	Environmental Design Meeting	7				



3/6	OP	Weekly Officers' Planning Meeting	9				
3/20	OP	Environmental Design Meeting	7				
3/20	OP	Weekly Officers' Planning Meeting	7				
3/22 – 3/24	PM, FT	PSWC	39				
3/27	OP	Weekly Officers' Planning Meeting	7				
4/3	OP	Weekly Officers' Planning Meeting	8				
4/10	OP	Weekly Officers' Planning Meeting	8				
4/17	OP	Weekly Officers' Planning Meeting	9				
4/21	SF	YMF Social	5				
4/24	PM	USC Construction Management Symposium	15				
4/24	PM	Meeting with Brian Pallasch	50				
4/28	OP, FT	Steel Shipment Relocation	4				
5/1	OP	Weekly Officers' Planning Meeting	7				

8/30	PM	1 <sup>st</sup> General Meeting	32				
9/4	OP	PSWC Planning Committee Meeting	10				
9/6	OP	Weekly Officers' Planning Meeting	8				
9/7	OP	Steel Bridge – First Design Meeting	8				
9/10	OP	PSWC Planning Committee Meeting	10				
9/10	OP	Concrete Canoe – Information Session	20				
9/11	FT	Concrete Canoe – Information Session	19				
9/13	OP	Weekly Officers' Planning Meeting	9				
9/17	OP	PSWC Planning Committee Meeting	9				
9/20	OP	Weekly Officers' Planning Meeting	9				
9/23	FT	Concrete Canoe – Paddling Practice	10				
9/24	OP	PSWC Planning Committee Meeting	10				
9/27	OP	Weekly Officers' Planning Meeting	8				

9/30	FT	Concrete Canoe – Paddling Practice	10				
10/1	OP	PSWC Planning Committee Meeting	10				
10/4	OP	Weekly Officers’ Planning Meeting	8				
10/5	OP	Lab Clean-up	7				
10/7	FT	Concrete Canoe – Paddling Practice	8				
10/7	FT, SF	Officer Retreat to Magic Mountain	9				
10/8	OP	PSWC Planning Committee Meeting	10				
10/11	OP	Weekly Officers’ Planning Meeting	10				
10/14	FT	Concrete Canoe – Paddling Practice	6				
10/15	OP	PSWC Planning Committee Meeting	9				
10/15	PM	2 <sup>nd</sup> General Meeting with Jackie Patterson					
10/18 – 10/20	PM, FT	ASCE’s 142 <sup>nd</sup> Annual Conference	6				
10/19	OP, FT	Steel Bridge – Steel Shipment Relocation	4				

10/22	OP	PSWC Planning Committee Meeting	10				
10/25	OP	Weekly Officers' Planning Meeting	10				
10/28	OP	Concrete Canoe – Mix Creation: Modified Escape	3				
10/29	OP	PSWC Planning Committee Meeting	10				
10/31	OP	Weekly Officers' Planning Meeting	9				
11/1	OP	Weekly Officers' Planning Meeting	8				
11/4	OP	Concrete Canoe – Mix Creation: Three New Mixes	4				
11/5	OP	PSWC Planning Committee Meeting	10				
11/5	OP	Concrete Canoe – Mix Testing	4				
11/8	OP	Weekly Officers' Planning Meeting	9				
11/11	OP	Concrete Canoe – Mix Design & Creation: More Mixes	3				
11/12	OP	PSWC Planning Committee Meeting	9				
11/15	OP	Weekly Officers' Planning Meeting	10				



**3. ASCE SECTION/BRANCH AND OTHER PROFESSIONAL MEETINGS**

Please list the date, location, and other information below for any meetings sponsored by the ASCE Section, Branch, or Society-level (i.e., National) that members of your ASCE Student Organization attended this calendar year. Also list any technical group meetings or meetings of other professional organizations attended by members of your organization.

Date	Location	Name of Host Group/Event	# of ASCE Students Present	# of ASCE Members Present
3/9	Downtown Los Angeles	YMF Student Night Job Fair	4	>100
4/24	USC	USC ASCE & MLAB – Speaker: Brian Pallasch	10	35
10/6	Mission Inn, Riverside CA	LA Section Installation	2	>100
10/18-10/20	Montreal, Canada	ASCE National Conference	6	Several hundred
12/7	Tustin, CA	LA Section Board Meeting	2	15

**Statistical Information:**

Did your ASCE Student Org. host at least one ASCE Section/Branch/Technical group meeting? No

Total number of students who attended ASCE Section/Branch/Technical group meetings 6

**PART IV. STUDENT ORGANIZATION ACTIVITIES**

**1. PARTICIPATION IN STUDENT CONFERENCE & WSCL**

- a. Did your ASCE Student Organization attend a Student Conference during the year? Yes  
 Number of representatives attending: 6  
 Name of Conference: Student Round-up 2012  
 Location: CSU-Long Beach  
 Dates: 12/1/12
- Did your ASCE Student Organization host or co-host this Student Conference? No
- b. Did your ASCE Student Organization attend a Workshop for Student Chapter Leaders (WSCL) during the year? No

**2. ASCE STUDENT ORGANIZATION NEWSLETTER & ON-LINE PRESENCE**

- a. Does the ASCE Student Organization prepare its own newsletter? Yes  
 Number of issues during Annual Report year: 12
- b. Does the ASCE Student Organization maintain an up-to-date on-line presence (i.e. website, social media, etc.)?  
 (Address must be listed on page 1 of the Annual Report) Yes

**3. PRESENTATIONS OUTSIDE OF THE ASCE STUDENT ORGANIZATION**

- a. Did any student members of your organization make presentations outside of your ASCE Student Organization? Yes  
 Number of presentations made: 3

Date	Student Presenter(s)	Presentation Title	Event Sponsor	Location
9/7/12	Oscar Rivera	Funding Request and Summary of Activities	David M. Wilson	USC University Club
9/16/12	Oscar Rivera & Theresa Kurth	Planning the Pacific Southwest Conference 2013	Senior Associate Dean Louise Yates	Viterbi School of Engineering main conference room
12/7/12	Oscar Rivera & Theresa Kurth	Pacific South West Conference 2013	LA Section	Tustin, CA

**4. PARTICIPATION IN ASCE STUDENT MEAD PAPER COMPETITION**

- Did a member of your ASCE Student Organization submit a paper to the National Daniel W. Mead Student Paper Contest during the year of this report? Yes  
 Author: Karl Tingwald  
 Paper Title: Impact of Cross Cultural Collaboration on Civil Engineering Ethics

**5. PARTICIPATION IN ASCE SOCIETY-LEVEL CIVIL ENGINEERING EVENT**

Was your ASCE Student Organization represented at any ASCE Society-level (i.e., National) Event? Yes

Event Name: ASCE National Conference  
 Location: Montreal, Canada  
 Dates: October 18-20, 2012

Number of Representatives:  6  Student(s)  
 0  Advisors (Faculty and/or Practitioner)

**6. COLLABORATION WITH OTHER STUDENT ORGANIZATIONS**

Has your ASCE Student Organization collaborated with other student organizations on your campus in the last 12 months? Yes

Activity Date	Collaborating Organizations	Program (Briefly describe program.)	Attendance			
			ASCE Students	Other students	Faculty or Practitioner Advisors	Other
9/15/11	ASCE, CMAA, Chi Epsilon, ASBME, ASME, SGT, ADT, SC Racing, Rocket Lab, Underwater Robotic, EKN, SWE, SHPE, TBP, IEEE, PTS, EWB, CED, NSBE, NOBE	Viterbi President's Council meetings which occur monthly to collaborate on school wide issues as well as individual organizational issues.	2	38	0	2

**7. PRACTITIONER & FACULTY ADVISOR TRAINING WORKSHOP**

a. Did your Faculty Advisor attend the Practitioner & Faculty Advisor Training Workshop (this year or in the past)? Yes  
 Date: 2011

b. Did one of your Practitioner Advisors attend the Practitioner & Faculty Advisor Training Workshop (this year or in the past)? Yes  
 Date: 2005



---

## Attachment A



## Membership Lists

## Local Student Organization Membership List

<u>Name</u>	<u>Member Position</u>	<u>Email Address</u>	<u>Expected Graduation Date</u>
Alam, Sian	General Member	<a href="mailto:corcioal@usc.edu">corcioal@usc.edu</a>	5/14
Allen, Mackenzie	General Member	<a href="mailto:mackenla@usc.edu">mackenla@usc.edu</a>	5/14
Alsalem, Loay	Social Co-Chair	<a href="mailto:lalsalem@usc.edu">lalsalem@usc.edu</a>	5/13
Brace, Channing	General Member	<a href="mailto:brace@yahoo.com">brace@yahoo.com</a>	5/13
Corcio-Alvarez, Davi	Historian	<a href="mailto:corcioal@usc.edu">corcioal@usc.edu</a>	5/14
Dana, Omar	Fundraising Chair	<a href="mailto:odana@usc.edu">odana@usc.edu</a>	5/13
DeBarros, Joao	Social Co-Chair	<a href="mailto:jdebarro@usc.edu">jdebarro@usc.edu</a>	5/13
Delgadillo, Jorge	General Member	<a href="mailto:jorgedel@usc.edu">jorgedel@usc.edu</a>	5/14
Gamble, Anthony	General Member	<a href="mailto:adgamble@usc.edu">adgamble@usc.edu</a>	5/16
Hagedorn, Morgan	General Member	<a href="mailto:morgan.hagedorn@gmail.com">morgan.hagedorn@gmail.com</a>	5/13
Halsey, Nick	General Member	<a href="mailto:nhalsey@usc.edu">nhalsey@usc.edu</a>	5/16
Hermle, Jake	Concrete Canoe Co-Captain	<a href="mailto:hermle@usc.edu">hermle@usc.edu</a>	5/14
Hernandez, Fausto	General Member	<a href="mailto:faustohe@usc.edu">faustohe@usc.edu</a>	5/15
Hsieh, Aaron Wai Kit	General Member	<a href="mailto:aaronwah@usc.edu">aaronwah@usc.edu</a>	5/13
Hung, Joshua	General Member	<a href="mailto:Joshuah@usc.edu">Joshuah@usc.edu</a>	5/13
Huong, Daniel	PSWC Chair/Steel Bridge Co-Captain	<a href="mailto:daniel5410@yahoo.com">daniel5410@yahoo.com</a>	5/15
Jin, Zheng (Steven)	General Member	<a href="mailto:zhengjin@usc.edu">zhengjin@usc.edu</a>	5/13
Lau, Roberta	General Member	<a href="mailto:lauober@usc.edu">lauober@usc.edu</a>	5/13
Lau, Rosa	Environmental Co-Captain	<a href="mailto:rosalau@usc.edu">rosalau@usc.edu</a>	5/14
Levy, Samuel	Design Team Chair	<a href="mailto:samueljl@usc.edu">samueljl@usc.edu</a>	5/13
Liu, Benjamin	General Member	<a href="mailto:benjamcl@usc.edu">benjamcl@usc.edu</a>	5/15
Lu, Shentong (Patrick)	General Member	<a href="mailto:shentonl@usc.edu">shentonl@usc.edu</a>	5/13
Lynch, Kelly	General Member	<a href="mailto:kellylyn@usc.edu">kellylyn@usc.edu</a>	5/16
Kahn, Erin	Concrete Canoe Co-Captain	<a href="mailto:erinkahn@usc.edu">erinkahn@usc.edu</a>	5/13
Karow, Tyler	General Member	<a href="mailto:karow@usc.edu">karow@usc.edu</a>	5/16
Koch, Jeremy	General Member	<a href="mailto:jeremyko@usc.edu">jeremyko@usc.edu</a>	5/16
Kurth, Theresa	Vice President	<a href="mailto:tkurth@usc.edu">tkurth@usc.edu</a>	5/13
Maass, Jessica	General Member	<a href="mailto:maass@usc.edu">maass@usc.edu</a>	5/16
Nguyen, Vincent	General Member	<a href="mailto:vincenkn@usc.edu">vincenkn@usc.edu</a>	5/15
Nour, Christina	General Member	<a href="mailto:cnour@usc.edu">cnour@usc.edu</a>	5/16
Palmieri, Thomas	Steel Bridge Co-Captain	<a href="mailto:tpalmier@usc.edu">tpalmier@usc.edu</a>	5/13
Paschoal, Thomaz	Treasurer	<a href="mailto:paschoal@usc.edu">paschoal@usc.edu</a>	5/13
Pochowski, Laura	General Member	<a href="mailto:pochowsk@usc.edu">pochowsk@usc.edu</a>	5/13
Portillo Jr., Ricardo	General Member	<a href="mailto:portillr@usc.edu">portillr@usc.edu</a>	5/15
Reich, David	General Member	<a href="mailto:dreich@usc.edu">dreich@usc.edu</a>	5/16
Richardson, Benjamin	General Member	<a href="mailto:berichar@usc.edu">berichar@usc.edu</a>	5/16
Rivera, Oscar	President	<a href="mailto:riverame@usc.edu">riverame@usc.edu</a>	5/13
Rodriguez, Estevan	Community Service Chair	<a href="mailto:estevanr@usc.edu">estevanr@usc.edu</a>	5/13
Rosca, Evan	General Member	<a href="mailto:erosca@usc.edu">erosca@usc.edu</a>	5/15
Rudolph, Jacob	General Member	<a href="mailto:jrudolph@usc.edu">jrudolph@usc.edu</a>	5/13
Sagardia, Emily	General Member	<a href="mailto:sagardia@usc.edu">sagardia@usc.edu</a>	5/16
Sahai, Naren	General Member	<a href="mailto:nsahai@usc.edu">nsahai@usc.edu</a>	5/14
Su, Rongcan (RC)	General Member	<a href="mailto:rongcans@usc.edu">rongcans@usc.edu</a>	5/13
Takebayashi, Elise	Environmental Co-Captain	<a href="mailto:takebaya@usc.edu">takebaya@usc.edu</a>	5/14
Totoris, Chase	General Member	<a href="mailto:totoris@usc.edu">totoris@usc.edu</a>	5/15
Tran, Charlie	PSWC Co-Chair	<a href="mailto:charliet@usc.edu">charliet@usc.edu</a>	5/13
Tsau, Allison	General Member	<a href="mailto:atsau@usc.edu">atsau@usc.edu</a>	5/16
Ung, Jhumann	General Member	<a href="mailto:jhumannu@usc.edu">jhumannu@usc.edu</a>	5/13
Vides, Jennifer	Communications Chair	<a href="mailto:vides@usc.edu">vides@usc.edu</a>	5/14
Wilson, Katherine	Secretary	<a href="mailto:katheraw@usc.edu">katheraw@usc.edu</a>	5/13

---

Xiao, Dawei	General Member	<a href="mailto:daweixia@usc.edu">daweixia@usc.edu</a>	5/15
Yamashita, Erin	General Member	<a href="mailto:emyamash@usc.edu">emyamash@usc.edu</a>	5/16
Yu, Jenny	General Member	<a href="mailto:yujenny@usc.edu">yujenny@usc.edu</a>	5/15
Zhang, Justin	Steel Bridge Co-Captain	<a href="mailto:zhang51@usc.edu">zhang51@usc.edu</a>	5/13

### Society Level Membership List

<u>Name</u>	<u>National ID Number</u>	<u>Email Address</u>	<u>Grad Date</u>
Alam, Sian	984902	<a href="mailto:sianalam@usc.edu">sianalam@usc.edu</a>	5/14
Brace, Channing	9092205	<a href="mailto:brace@yahoo.com">brace@yahoo.com</a>	5/13
Corcio-Alvarez, Davi	9141385	<a href="mailto:joshuahu@usc.edu">joshuahu@usc.edu</a>	5/14
Dana, Omar	1007647	<a href="mailto:odana@usc.edu">odana@usc.edu</a>	5/13
Hermle, Jake	1015692	<a href="mailto:hermle@usc.edu">hermle@usc.edu</a>	5/14
Hung, Joshua	9125671	<a href="mailto:joshuahu@usc.edu">joshuahu@usc.edu</a>	5/13
Huong, Daniel	9115582	<a href="mailto:daniel5410@yahoo.com">daniel5410@yahoo.com</a>	5/15
Lau, Rosa	995179	<a href="mailto:rosalau@usc.edu">rosalau@usc.edu</a>	5/14
Levy, Samuel	950680	<a href="mailto:samueljl@usc.edu">samueljl@usc.edu</a>	5/13
Kurth, Theresa	1013859	<a href="mailto:tkurth@usc.edu">tkurth@usc.edu</a>	5/13
Paschoal, Thomaz	996759	<a href="mailto:paschoal@usc.edu">paschoal@usc.edu</a>	5/13
Portillo Jr., Ricardo	9114710	<a href="mailto:portillr@usc.edu">portillr@usc.edu</a>	5/15
Rivera, Oscar	955849	<a href="mailto:riverame@usc.edu">riverame@usc.edu</a>	5/13
Rosca, Evan	9379224	<a href="mailto:eroska@usc.edu">eroska@usc.edu</a>	5/15
Sahai, Naren	1021131	<a href="mailto:nsahai@usc.edu">nsahai@usc.edu</a>	5/14
Totoris, Chase	9113880	<a href="mailto:totoris@usc.edu">totoris@usc.edu</a>	5/15
Ung, Jhumann	1016532	<a href="mailto:jhumannu@usc.edu">jhumannu@usc.edu</a>	5/13
Wilson, Katherine	1017060	<a href="mailto:katheraw@usc.edu">katheraw@usc.edu</a>	5/13
Yamashita, Erin	9505573	<a href="mailto:emyamash@usc.edu">emyamash@usc.edu</a>	5/16


---

## Attachment B



## Sample Meeting Announcements, Programs, Agendas

## Sample Recruiting Brochure



**USC ASCE**

The American Society of Civil Engineers

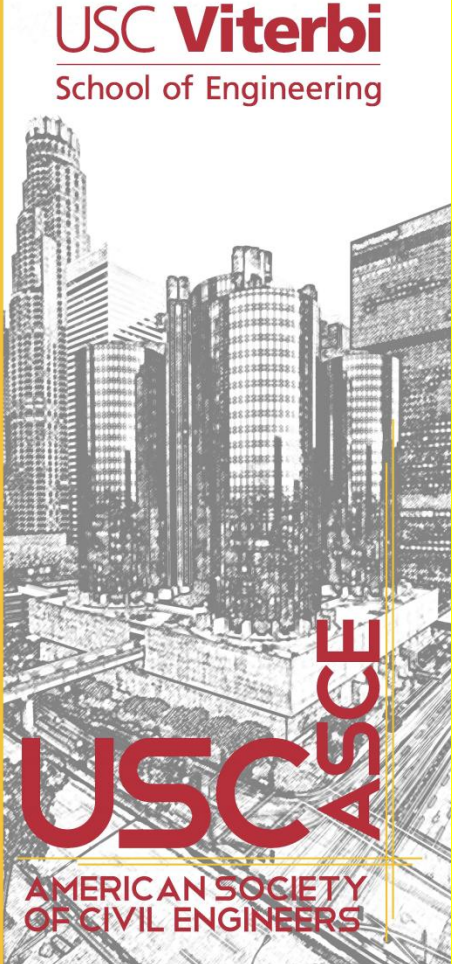

**Faculty Advisor**  
Professor Henry Koffman

<http://viterbistudents.usc.edu/asce/>  
uscasce@usc.edu  
213.740.0612 tel  
213.744.1426 fax  
Kaprielian Hall #241

**About ASCE**  
The American Society of Civil Engineers, America's premier and professional engineering society, was founded in 1852 to enhance the welfare of humanity by advancing the science and profession of civil engineering. As the oldest society of its kind, ASCE has historically been a leader in determining and upholding sound principles of engineering practice.

**About USC ASCE**  
The ASCE chapter at USC is a student run organization that promotes the enhancement of the civil engineering student. In preparation for a successful future, ASCE serves as the link between the university and professional experience. Founded in 1924, USC ASCE is the third oldest student chapter nationally and continues to function on the organizations founding principles.

**ASCE**  
American Society of Civil Engineers



**USC Viterbi**  
School of Engineering

**USC ASCE**  
AMERICAN SOCIETY OF CIVIL ENGINEERS

Front of brochure

---

## PRACTICAL EXPERIENCE AND OPPORTUNITIES

Members of the USC American Society of Civil Engineers participate in a number of activities that expose students to industry and provide them with practical knowledge and experience. At the annual Pacific Southwest Conference, teams enter concrete canoe, steel bridge, and other engineering events that encourage healthy competition between regional schools. Field trips to project sites and recognized landmarks also give students opportunities to see results and real world applications of principles learned in the classroom.

Throughout the year students can participate in a number of community outreach programs and are able to attend conferences where teamwork skills can be developed and connections with industry professionals can be made. As a member of the USC American Society of Civil Engineers, you are also eligible to win scholarships from both region and national chapters.



## NETWORKING AND SOCIAL EVENTS

Guest speakers at USC ASCE general meetings are a great opportunity for students to meet professionals and learn more about the facets of civil engineering. Not only are meetings a chance to network with members of industry, but it's a great opportunity to meet other civil engineering students and it never hurts that there is always free food! Other social events held throughout the year allow students to get to know one another better and unwind after a long week of tedious classes.



Back of brochure

---

## Sample Meeting Announcement Email

Hello everyone,

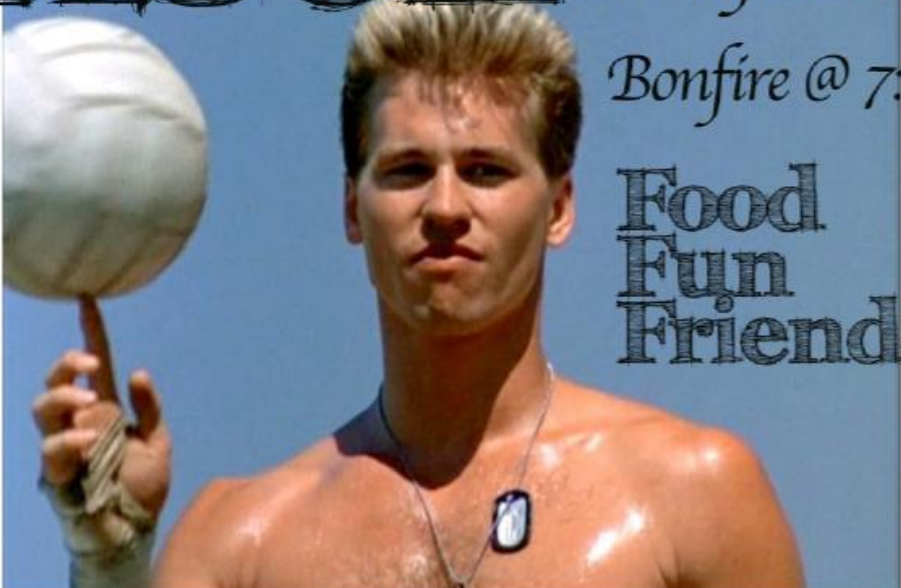
Just a reminder, our **General Meeting is tonight at 5:30pm** with guest speaker **Jackie Patterson** in **KAP 140**. Please note the new location of the event. Ms. Patterson is President and founder of J.L. Patterson & Associates, Inc. and her firm was ranked by CE News in 2011 as the Best Small Firm to work for in the country so she should have a lot of interesting things to say. There will also be free food!

Also, the City of LA is looking to hire a Structural Engineering Associate. They do not hire for this position very often so if you are interested follow the instructions on the link below. Deadline is **TONIGHT** at midnight

USC ASCE

---

**Sample Event Flyer**



**ASCCE** Dockweiler Beach  
Volleyball @ 3:30  
Bonfire @ 7:00  
Food  
Fun  
Friends

The flyer features a central photograph of a young man with a pompadour hairstyle, shirtless and wearing a dog tag necklace, balancing a white volleyball on his right index finger. The background is a clear blue sky. The text is overlaid on the top and right sides of the image.

*Please RSVP for the Volleyball Tournament by sending an email to [social@uscasce.com](mailto:social@uscasce.com) including your name and teammates  
4 Players to a team*



**Sample Officer Meeting Records**



---

## Secretarial Minutes

### ASCE E-Board Minutes 1/31/12

Officers present: Oscar, Katie, Thomaz, Erin, Theresa, Thomas, Jake, Loay

- 7:06 – meeting begins
  - PSWC
    - 41 people signed up
    - 10 people haven't paid
- 7:10
  - Oscar talked to Brian Pallasch
    - Wants to come last week of April – either Monday or Thursday
      - Monday would work better
- 7:12
  - ASCE LA Branch people
    - We think the topic should be why engineers should vote
    - He thinks we could make it a sort of debate about certain issues
- 7:13
  - Leland Rorex from Disney wants to come
    - Going to figure out date
- 7:14
  - Annual report finished!
- 7:16
  - Steel Bridge
    - Main bridge except for truss should be finished by Feb. 17<sup>th</sup>
    - Whole bridge by March 9<sup>th</sup>
    - Need to narrow down the people who want to participate
- 7:18
  - Concrete Canoe
    - Ordered reinforcing
      - Need to be sanded so the concrete will stick better
      - Oscar picking up tomorrow
    - Ready to pour on Saturday
- 7:20
  - Need to clean-up lab
  - Pour on Saturday – starting at 2
- 7:24
  - Social Events
    - Still looking into camping President's day weekend
- 7:27
  - Lab safety with Lance on Friday from 2-5

- 
- 7:30
    - Need to get hotel room for PSWC by next week
  - 7:33
    - Event write-ups for every event due to Katie within the week after they happen!!
  - 7:35 – meeting adjourned

## President's Meeting Record

### ASCE Executive Board Meeting

Date: Thursday 11/8/12

Attendees:

Oscar Rivera	X	Erin Khan	X
Theresa Kurth	X	Jake Hermle	X
Thomaz Paschoal	X	Sam Levy	
Chris Hong	X	Thomas Palmieri	X
Omar Dana	X	Justin Zheng	
Rosa Lau		Loay Alsalem	X
Joao DeBarros	X	Katherine Wilson	X

Action Items (need to be completed and addressed by next meeting)

Item Description	Persons Responsible	Action/Timeline	Updates
Student Roundup	Everyone	Confirm attendance	8 e-board, 2 non-e-board going
Social Events	Joao, Loay	Need to have Holiday Party details set, bowling night next semester	Holiday Party will be at the 2-9 Café at 7pm, followed by movies at Thomas' place. Looking at locations for bowling night
Concrete Canoe	Erin, Jake, Oscar	Updates	Paddling practice on Sunday, weather pending. Continuing to do test mixes, lab tour this Thursday
Steel Bridge	Thomas	Get steel	Thomas finally got hold of Justin, will talk to Cal State Steel soon. Looking for other donators
Environmental	Rosa	Updates	Emails going back and forth, they seem to be on track with everything
Annual Report	Katie, Oscar,	GET STARTED	Begin working on

---

	Theresa		report ASAP
--	---------	--	-------------

**Event Record Template**

ASCE EVENT SHEET

**EVENT TITLE:**

**DATE:**

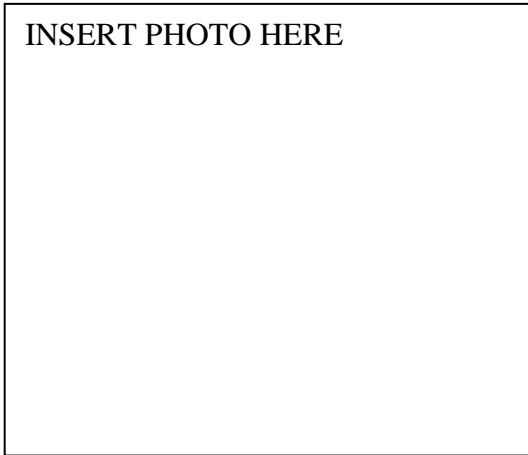
**LOCATION:**

**ATTENDEES: BOARD MEMBERS:**

MEMBERS:           TOTAL:

**REPORT PREPARED BY:**

**DESCRIPTION OF EVENT/PURPOSE:**



**ACTIVITY ASSESSMENT: (SUCCESSES/PROBLEMS)**

**SPEAKER/SPEAKER CONTACT INFO:**

**PREPARATIONS:**

**BUDGET:**

*Please attach sign-in sheet!*

---

## Attachment C



**Sample Newsletter and/or Printout of Website**

---

## Sample Newsletter

### USC ASCE Weekly Update

September 9, 2012

#### In This Issue

- > Concrete Canoe Mix Design Meeting
- > First Paddling Practice
- > Steel Bridge Sessions
- > Volunteering with ASCE
- > P SWC Planning Committee Meeting
- > P SWC Concrete Canoe Rules



Join our Facebook Page!



Please send any questions, comments or concerns to [uscasce@usc.edu](mailto:uscasce@usc.edu)

#### Concrete Canoe Mix Design Meeting

Come out to concrete canoe's first meeting of the year! We will be going over this year's rules, learning a little bit about concrete mix design, and getting our hands dirty making a baseline concrete mix. Open to anybody interested in concrete canoe, no experience/prior knowledge needed.

Date: Wednesday, September 18th  
Time: 4pm

Location: KAP B30

#### First Paddling Practice!

Paddling Practices are finally here! For those new to ASCE, paddling practices help us prepare for our concrete canoe racing competition. If you are interested Meet outside KAP at 9:30am sharp on Sunday and we will carpool to Newport Aquatic Center. After practice we will stop at In-N-Out Burger and return to campus by 1:30pm. Please RSVP to this email as soon as possible stating if you are coming to practice and if you can drive, so we can coordinate the carpool. If you plan to attend practice, fill out the attached waiver and return it to KAP B30 (slide under the door) no later than Friday 9/21.

Date: Sunday, September 23

Time: 9:30am

Location: Outside of KAP

#### Steel Bridge Sessions

If you are interested in being part of the steel bridge team this is for you!!

Steel Bridge Welding Sessions/Safety Instructions - During our first two welding sessions myself and Lance Hill (the Civil Departments Lab Manager) will go over some general safety requirements such proper safety gear and equipment use. After going over safety down in the lab we will start some welding practices. Also if anyone is interested in doing a 334 project to help the steel bridge team please email Thomas Palmieri [attpalmier@usc.edu](mailto:attpalmier@usc.edu).


Below are the schedule welding dates and times:

- ◊ Sept. 27th from 11am to 2pm
- ◊ Sept. 28th from 9am to 11am

Location: KAP Basement

---

## Printout of Website Homepage (uscasce.com)



USC Viterbi  
School of Engineering

---

Site Home

### The American Society of Civil Engineers Student Chapter at The University of Southern California

**ANNOUNCEMENTS:**

Welcome back to one of the most awesome ASCE student chapters in LA! We hope you have enjoyed our events so far throughout the semester, we still have many more to come!

**Membership forms for 2011-12 are now available! Click the link on the sidebar for more information.**

- You can now follow us on Twitter! <http://twitter.com/uscasce>
- You can also now join us on Facebook [www.facebook.com/index.php](http://www.facebook.com/index.php)
- Check out ASCE national news and updates at <http://www.asce.org/>
- The 5-Year Strategic Plan for USC ASCE has been published! [Please click here to read the 5-Year Strategic Plan.](#)
- Congratulations to our past PSWC teams from 2010-11 for their great performance in Vegas and Los Angeles!! [Click here to see pictures from the events.](#)
- The 2009 Report Card for America's Infrastructure has been released. [Find the Report and Suggestions for Improvement Here.](#)

---

---

## Attachment D



## Summary and Highlights of Meetings and Activities



---

# ASCE Big Bear Ski Trip

**DATE:** 1/13/12-1/15/12

**LOCATION:** Big Bear Mt.

**ATTENDEES:** BOARD MEMBERS:  
5

MEMBERS: 12 TOTAL: 17



## **DESCRIPTION OF EVENT/PURPOSE:**

The event was an opportunity for members of the club to get to know the board members and interact with them. It allowed members of the club to share their concerns or questions about the purpose of the club and the activities that they would like to participate in or organize. Plus, it was a chance for some of the members, who had not skied or snowboarded before, to get out on the mountain with their fellow members and learn from one another in a more open setting, which would lead to a more open dialog between them.

## **SUCSESSES/PROBLEMS:**

All the attendees enjoyed the trip and a new and closer relationship was developed. The shared learning experience on the mountain and the group meals helped bring the members of the club closer and led to better communications on club matters during the semester. The problem that we were faced with on this trip is that some of the first time skiers or snowboarders found it difficult to sit or walk properly for the few next days after the trip.

## **PREPARATIONS:**

Arrangements were made to book the cabin in advance. Food and groceries were planned for depending on the number of the attendees. And also carpools were made for rides to Big Bear and back so that everybody would feel comfortable all throughout the trip.

---

# Concrete Specimen 28 Day Testing

**DATE:** 1/15/12

**LOCATION:** USC Kaprielian lab

**ATTENDEES:** BOARD MEMBERS: 2  
MEMBERS: 1 TOTAL: 3

**REPORT PREPARED BY:** Erin Khan

## **DESCRIPTION OF**

**EVENT/PURPOSE:** This activity was meant to determine the strengths of the mixtures created for potential use in the 2012 concrete canoe. Three different mixtures were tested at the 28-day mark and results were recorded for later analysis.

## **ACTIVITY ASSESSMENT:**

This activity was highly successful thanks to the assistance of the lab manager Lance

Hill for setting up the universal testing machine for the concrete canoe team's use. No problems occurred during the testing.

**PREPARATIONS:** Preparations included contacting lab manager Lance Hill to prepare capping compound for the test specimens and setting up the testing machine.

**BUDGET:** No budget for this event.



---

# Environmental Design Meetings

**DATE:** Every Tuesday in January—March

**LOCATION:** Kaprielian Hall

**ATTENDEES:** BOARD MEMBERS: 2  
MEMBERS: 5                      TOTAL: 7

**DESCRIPTION OF EVENT/PURPOSE:**

Conducted tests to determine which methods would be best for our filter design.  
- Practiced constructing our apparatus for the competition.



**SUCSESSES/PROBLEMS:**

-Consistent amount of team members attending weekly meeting.  
-Design completed on schedule.

**SPEAKER/SPEAKER CONTACT INFO:**

Rosa Lau, Team Co-Captain 2011-2012  
Roberta Lau, Team Co-Captain 2011-2012

**PREPARATIONS:**

Contacted Cal Poly Pomona regarding clarification of rules.  
Purchased supplies for testing.

---

# Viterbi Get Connected! Involvement Fair

**DATE:** 1/19/12

**LOCATION:** E-Quad

**ATTENDEES:** BOARD MEMBERS: 3  
MEMBERS: 3      TOTAL: 3

**REPORT PREPARED BY:**  
Oscar Rivera

## **DESCRIPTION OF EVENT/PURPOSE:**

This event put on by Viterbi gave us a wonderful recruiting opportunity to get spring admits and those who didn't get a chance to find out about us first semester to sign up and become involved.

**ACTIVITY ASSESSMENT:** This event was very successful for us. We had 9 new recruits, 1 of which has gone on to become a member. While this is a low percentage, we were more interested in just getting our name out there to more of the civil students. As soon as you can get them on the email list, our assumption is that they will be more and more tempted to come out to events.

**PREPARATIONS:** Bring pieces of the canoe and steel bridge



---

# Paddling Practice

**DATE:** 1/22/12

**LOCATION:** Newport Aquatic Center

**ATTENDEES:** BOARD MEMBERS: 3  
MEMBERS: 3 TOTAL: 6

**REPORT PREPARED BY:** Erin Khan

**DESCRIPTION OF EVENT/PURPOSE:**

This activity was to continue practicing proper paddling techniques and turning techniques. We paddled halfway down the bay since the current was strong, practiced turning around a buoy, and paddled a little further down to another buoy to do more turns. We paddled back to shore after about 2 hours.



**ACTIVITY ASSESSMENT:**

Activity was successful since each pair of tandem paddlers were able to complete turns in both directions relatively swiftly. Focusing a lot on one aspect, turning, really improved members' paddling performance.

**PREPARATIONS:** Preparations included getting RSVP's from team members, arranging carpools, and providing life jackets for the practice.

**BUDGET:** No budget for this event.

---

# PSWC 2012

**DATE:** March 22-24, 2012  
**LOCATION:** California State Polytechnic University, Pomona  
**ATTENDEES:** BOARD MEMBERS: 15  
MEMBERS: 26 TOTAL: 39  
**REPORT PREPARED BY:** Davi Corcio-Alvarez



**DESCRIPTION OF EVENT/PURPOSE:** The student chapters for ASCE hold an annual competition known as The Pacific South West Conference (PSWC). This competition is designed for the students in the organization to encounter and solve professional civil engineering problems. The competition includes a variety of events, such as concrete canoe design, steel bridge building, surveying, geotechnical design, and environmental design. Aside from these main events, there are other engineering and non-engineering events that make up the competition, which include a scavenger hunt, mystery event, quiz pong, concrete bowling, and sports. The PSWC 2012 took place at the California State Polytechnic University, Pomona on March 22-24. The conference included the many events and an awards banquet, in which the students from many colleges came together for three days.

**ACTIVITY ASSESSMENT:** The students who attended the PSWC had a memorable experience. Students were able to participate in many of the events and also watch the events. For example, the scavenger hunt allowed for students to interact with students from other colleges. The students learned while participating and watching the events, getting to know the other colleges' creativity and how other students encountered problems. Overall, USC placed 10<sup>th</sup> out of 18 colleges. The canoe was raced in all but one of the canoe events; the canoe broke in the middle of a race, but we managed to place well in the overall canoe competition. We also did well on other events. We placed 3<sup>rd</sup> in Impromptu, 3<sup>rd</sup> in Quiz Pong, and 2<sup>nd</sup> in Mystery Event. Even though we did well on these events, on some of the events there was no preparation or even a group of participants until the last moment. However, the group was able to think on their feet and make the judges laugh with their skit in the Concrete Bowling. The PSWC was a learning experience in allowing to students to test and question their designs, and learn how to make something better for the next year. The students from every college showed a lot of school spirit in a healthy and fun way. Our chapter was smaller than many of the other colleges, but with struggles and successes, USC managed to make an impression.

**PREPARATIONS:** The design teams started working on their designs and events when the semester commenced. They worked hard every week and practiced, such as building the steel bridge and paddling. They recruited members throughout the fall and spring semesters, and were always open to newly interested students. The teams were focused and put in a lot of effort, that in the end they performed well. It would be beneficial to start on ideas for the themes of the canoe and making of the canoe to have more time in the end for aesthetics. For the smaller non-engineering events, there was not much preparation, even though some students did meet to practice and get the teams together.

---

# PSWC Environmental Competition

**DATE:** March 24, 2012

**LOCATION:** Cal Poly Pomona

**ATTENDEES:** BOARD MEMBERS: 2  
MEMBERS: 2 TOTAL: 4

## **DESCRIPTION OF EVENT/PURPOSE:**

The purpose of the competition was to design and build a short-term filter that could be used to treat hard water that was causing scaling in pipes in a distribution system. The final hardness, color, turbidity, and conductivity of the water were considered in judging, along with efficiency of the system and water loss. We also created and presented a poster and brochures for the judges.



The team members met multiple times in the KAP Basement for testing to decide which solution would be the most efficient. Our final product consisted of a pitcher with drainage holes on the bottom. Baking soda was added to remove hardness. A hydraulic jump was incorporated by pouring the water a distance away from the cap of the pitcher. A one-gallon water container was used to capture the final treated water.

## **SUCSESSES/PROBLEMS:**

- Created a professional brochure to present to the judges.
- Created a presentation board to present along with our filter.

## **SPEAKER/SPEAKER CONTACT INFO:**

Rosa Lau, Team Co-Captain 2011-2012  
Roberta Lau, Team Co-Captain 2011-2012

## **PREPARATIONS:**

Held weekly meetings to prepare for the competition. Purchased supplies so that we could build the apparatus from scratch during the competition.

---

## A Special Visit From Brian Pallasch: Are Gas Prices Too Low to Fund Our Nation's Infrastructure?

**DATE:** April 24, 2012

**LOCATION:** EEB 326

**ATTENDEES:** BOARD MEMBERS: 6 MEMBERS: 8  
TOTAL: 14

**REPORT PREPARED BY:** Oscar Rivera

**DESCRIPTION OF ACTIVITY/PURPOSE:** With the help of the Metropolitan Los Angeles Branch, we were fortunate to have Brian Pallasch, Managing Director of Government Relations and Infrastructure Initiatives of ASCE in Washington D.C., visit the USC Campus and gave an engaging talk on “The State of Our Nation's Infrastructure”.

He began with an overview of the most recent *Report Card for America's Infrastructure*, completed in 2009. He went on in depth about the two special reports that have been finished, which include *The Economic Impact of Current Investment Trends in Surface Transportation Infrastructure* and *The Economic Impact of Current Investment Trends in Water and Wastewater Treatment*. Needless to say, there is little good that can come of our current economic investment trends. For example, if nothing changes between now and 2020 in terms of investments in surface transportation infrastructure, America would lose at least 877,000 jobs, every family would lose an extra \$1,060 each year, and America's GDP would underperform by \$897 billion. In order to fix these problems, we need funding. And this comes with major challenges as well. The Federal Gas Tax, the only source of income for the Highway Trust Fund, has not gone up since 1993. This led to an exciting discussion on the benefits and drawbacks of raising the federal gas tax. Brian's talk was very enlightening and informative.

Brian also encourages civil engineers to become more involved in politics since we have the technical knowledge to persuade our government to act on these pressing issues. The first steps to doing so would be to join ASCE's Key Contact Program and “liking” ASCE's Save America's Infrastructure page on Facebook.

The LA Section President, John Hogan, was also in attendance. He took this opportunity to present Diego Cadena, with the award for Outstanding ASCE Practitioner Advisor from Region 9. Diego is the Practitioner Advisor for California State University, Los Angeles and was largely involved in planning the Pacific South West Conference hosted by CSULA in 2011.

**ACTIVITY ASSESSMENT:** Roughly 60 students and professionals were in attendance to hear Brian's message and honor Diego. This event was a big success and we hope to be able to have Brian come back again sometime!





---

# Steel Shipment Relocation

**DATE:** 4/28/12

**LOCATION:** Cal Poly Pomona - Kaprielian Hall

**ATTENDEES:** BOARD MEMBERS: 4  
MEMBERS: 0                      TOTAL: 4

**REPORT PREPARED BY:** Theresa Kurth

**DESCRIPTION OF EVENT/PURPOSE:** We picked up the steel and other supplies necessary for hosting conference from Cal Poly Pomona. We also had a meeting with their conference planning committee to talk about planning conference.

**ACTIVITY ASSESSMENT:**

This was a very helpful meeting! Pomona offered a lot of valuable information and advice to our conference planning committee.

**SPEAKER/SPEAKER CONTACT INFO:**

N/A

**PREPARATIONS:**

Rented a U-Haul for transporting the materials

---

# 1<sup>ST</sup> General Meeting

**DATE:** 8/30/12

**LOCATION:** Kaprielian Hall

**ATTENDEES:** BOARD MEMBERS: 12  
MEMBERS: 20            TOTAL: 32

**REPORT PREPARED BY:** Theresa Kurth

**DESCRIPTION OF EVENT/PURPOSE:** As a jump-start to the year, our first meeting was for the purposes of getting to know one another and learning more about what ASCE is all about. The president spoke about the different events and activities that ASCE is involved in while everyone enjoyed stuffing their faces with pizza. After the formalities, we played an engineering game. Everyone was split into teams of about 5 people and given a handful of bamboo sticks, masking tape, and a piece of cardboard. They were instructed to draft a design of a tower with the objective of being the tallest tower of the group that could hold the most jars of apple sauce. After 15 minutes of only drafting, the twist was revealed – they all had to switch drawings and build a different groups' design! The towers were then tested and the winners given a prize.

**ACTIVITY ASSESSMENT:** Everyone had a lot of fun and we had a really good turnout. It was a great way to start the year! In future years we plan to have the first meeting interactive, rather than jumping right into the speaker series.

**SPEAKER/SPEAKER CONTACT INFO:** N/A

---

# PSWC Planning Committee Meetings

**DATE:** Every Monday in Fall 2012

**LOCATION:** KAP 167

**ATTENDEES:** BOARD MEMBERS: 6  
MEMBERS: 4                      TOTAL: 10

**REPORT PREPARED BY:** Theresa Kurth

**DESCRIPTION OF ACTIVITY/PURPOSE:**

In 2013, USC is co-hosting the Pacific South West Conference with Loyola Marymount University and California Baptist University. Our planning committee meeting meets once a week to go over necessary items and assign tasks for the week.

**ACTIVITY ASSESSMENT:** We have been very productive over the past year! Almost all of the venues have been secured and we have a solid budget. We have been in constant communication with our university department of public safety and transportation departments planning logistics. The meals for the conference have been planned out and the supply lists keep getting longer!



---

# First Steel Bridge Design Meeting

**DATE:** 9/7/12

**LOCATION:** Kaprielian Hall

**ATTENDEES:** BOARD MEMBERS: 4  
MEMBERS: 8                   TOTAL:12

**REPORT PREPARED BY:** Thomas Palmieri



**DESCRIPTION OF EVENT/PURPOSE:**

- First General Meeting for Steel Bridge 2012.
- Provided a brief overview of goals and expectations
- Provide a short lab tour

**ACTIVITY ASSESSMENT:**

- Large turnout comprised of freshman, sophomores and juniors.
- Seniors are only the captains.

**SPEAKER/SPEAKER CONTACT INFO:**

Thomas Palmieri – Co-Captain

Daniel Haung – Co-Captain

Justin Zhang – Co-Captain

**PREPARATIONS:**

CAD & SAP2000 Model of Prelim Design

2012 Steel Bridge Rules

# Concrete Canoe Information Session 1

**DATE:** 9/10/12

**LOCATION:** Kaprielian Hall

**ATTENDEES:** BOARD MEMBERS: 5  
MEMBERS: 8 TOTAL: 20

**REPORT PREPARED BY:** Erin Khan

## DESCRIPTION OF

**EVENT/PURPOSE:** Purpose of this event was to introduce the concrete canoe team to prospective members. Freshmen and sophomore students were the focus of the presentation.

**ACTIVITY ASSESSMENT:** This activity was largely a success as many new faces turned up to the meeting. The timing of 4pm-5pm worked well for students with varied schedules, and resulted in a bigger, more diverse concrete canoe team. One problem with this info session was that a tour of the KAP lab in the basement was not carried out. Having the lab tour right after the info session is a good idea to stimulate member interest and recruitment.

**SPEAKER/SPEAKER CONTACT INFO:** N/A

**PREPARATIONS:** Preparations included sending out email notifications of the event, printing flyers, and preparing a PowerPoint presentation.

**BUDGET:** No budget for this event.



A flyer for ASCE Design Teams at USC. The top header includes 'American Society of Civil Engineers' and 'University of Southern California'. The main title is 'ASCE Design Teams' in yellow on a red background. Below the title, it lists 'Concrete Canoe Team' and 'Steel Bridge Team'. A photo shows students working on a bridge structure. The flyer also includes 'Fall 2012 - Spring 2013', 'Important Dates' (Fri. 9/21, Sun. 9/23, TBA), and contact information: 'Contact: canoe@uscasc.com or steelbridge@uscasc.com' and 'Fight On Trojans!'.

**Important Dates**

Fri. 9/21	Turn in waivers (check email) to KAP 241 door for paddling practice.
Sun. 9/23	First concrete canoe paddling practice! Details will be in email.
TBA	First steel bridge welding session!

**Who are we, and how can you be involved?**

USC ASCE (American Society of Civil Engineers) is a student chapter of ASCE that consists of a variety of design teams, two of which are the Concrete Canoe Team and the Steel Bridge Team. Each year, these teams compete in the PSWC (Pacific Southwest Conference) against other schools from the region. In addition to being a ton of fun, the competition gives you hands on experience with design and construction of an engineering project.

You can get involved with one or both of these teams by simply signing up on our email list! Various team activities include concrete mix design, steel welding sessions, canoe reinforcement construction, and bridge fabrication. No experience is necessary for either group, so don't hesitate to get involved and bring friends!

**More Questions?**  
Contact: canoe@uscasc.com or steelbridge@uscasc.com  
Fight On Trojans!

# Concrete Canoe Information Session 2

**DATE:** 9/11/12

**LOCATION:** Kaprielian Hall

**ATTENDEES:** BOARD MEMBERS: 4  
MEMBERS: 10 TOTAL: 19

**REPORT PREPARED BY:** Erin Khan

## DESCRIPTION OF

**EVENT/PURPOSE:** Purpose of this event was to introduce the concrete canoe team to prospective members. Freshmen and sophomore students were the focus of the presentation.

**ACTIVITY ASSESSMENT:** This activity was also a success in addition to the first info session. Strategically placing information sessions on different days facilitated a higher attendance rate for underclassmen. Info Session 2 improved upon the first info session because a tour of the KAP labs was completed. This encouraged new students to ask questions and understand more of what the team does.

**SPEAKER/SPEAKER CONTACT INFO:** N/A

**PREPARATIONS:** Preparations included sending out email notifications of the event, printing flyers, and preparing a PowerPoint presentation.

**BUDGET:** No budget for this event.



A flyer for ASCE Design Teams at USC. The top header includes 'American Society of Civil Engineers' and 'University of Southern California'. The main title is 'ASCE Design Teams' in yellow on a red background. Below the title, it lists 'Concrete Canoe Team' and 'Steel Bridge Team'. A photo shows students working on a red metal bridge structure. The text 'Fall 2012 - Spring 2013' is at the bottom of the red section. Below this, there is a section for 'Important Dates' with a table of events. To the right of the dates is a section titled 'Who are we, and how can you be involved?' with a paragraph about USC ASCE and a list of activities. At the bottom right, there is a 'More Questions?' section with contact information and the slogan 'Fight On Trojans!'.

Important Dates	
Fri. 9/21	Turn in waivers (check email) to KAP 241 door for paddling practice.
Sun. 9/23	First concrete canoe paddling practice! Details will be in email.
TBA	First steel bridge welding session!

**Who are we, and how can you be involved?**

USC ASCE (American Society of Civil Engineers) is a student chapter of ASCE that consists of a variety of design teams, two of which are the Concrete Canoe Team and the Steel Bridge Team. Each year, these teams compete in the PSWC (Pacific Southwest Conference) against other schools from the region. In addition to being a ton of fun, the competition gives you hands on experience with design and construction of an engineering project.

You can get involved with one or both of these teams by simply signing up on our email list! Various team activities include concrete mix design, steel welding sessions, canoe reinforcement construction, and bridge fabrication. No experience is necessary for either group, so don't hesitate to get involved and bring friends!

**More Questions?**  
Contact: canoe@uscasce.com or steelbridge@uscasce.com  
Fight On Trojans!

---

# Paddling Practice 1

**DATE:** 9/23/12

**LOCATION:** Newport Aquatic Center

**ATTENDEES:** BOARD MEMBERS: 6  
MEMBERS: 4 TOTAL: 10

**REPORT PREPARED BY:** Erin Khan

**DESCRIPTION OF EVENT/PURPOSE:**

Purpose of this event was to expose new paddling members to canoeing and to refresh the skills of experienced paddlers. Also, the event continued the tradition of team bonding through eating lunch together after practice.



**ACTIVITY ASSESSMENT:** The first paddling practice was a great success since we had a large turnout for the first practice. Four new paddlers also had the opportunity to canoe for the first time with ASCE and to gain some insight into what the actual competition will be like. Going to In-N-Out Burger after practice also allowed members to bond and replenish energy after a good workout.

**SPEAKER/SPEAKER CONTACT INFO:** N/A

**PREPARATIONS:** Preparations included sending out email notifications of the event, collecting waiver forms for transportation, and bringing safety jackets for canoeing.

**BUDGET:** No budget for this event.

---

# Paddling Practice 2

**DATE:** 9/30/12

**LOCATION:** Newport Aquatic Center

**ATTENDEES:** BOARD

**MEMBERS:** 6

**MEMBERS:** 4 **TOTAL:** 10

**REPORT PREPARED BY:** Erin Khan



**DESCRIPTION OF**

**EVENT/PURPOSE:** Purpose of this event was to enforce a consistent paddling practice schedule and to begin working on overall paddling skills of the team.

**ACTIVITY ASSESSMENT:** This activity was very successful as we were able to have a consistent attendance from paddlers of the previous week. This generated heightened interest in the concrete canoe team in underclassmen. Furthermore, team bonding after practice solidified the sense of being one group working together.

**SPEAKER/SPEAKER CONTACT INFO:** N/A

**PREPARATIONS:** Preparations included sending out email notifications of the event, collecting waiver forms for transportation, and bringing safety jackets for canoeing.

**BUDGET:** No budget for this event.



---

# Steel Bridge Welding Sessions

**DATE:** Various Days with throughout October and December

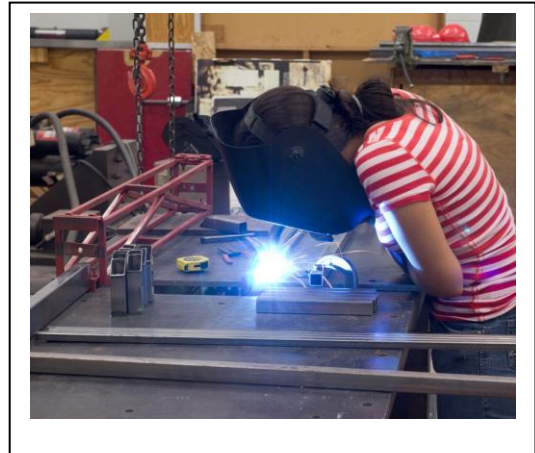
**LOCATION:** Kaprielian Hall

**ATTENDEES:** BOARD MEMBERS: 2  
MEMBERS: 8                      TOTAL: 10

**REPORT PREPARED BY:** Thomas Palmieri

**DESCRIPTION OF EVENT/PURPOSE:**

- Welding Tutorial for Steel Bridge Members
- Provide Beginners tutorial and practice to MIG Welding



**ACTIVITY ASSESSMENT:**

- All participating members were given the chance to weld little home decorations and learned proper welding techniques.
- Lack of sufficient scrap metal to allow more complex welding tutorials.
- Lack of sufficient number of welding hoods. Some members were asked to move out of welding area while others welded.

**SPEAKER/SPEAKER CONTACT INFO:**

Thomas Palmieri – Co-Captain  
Daniel Haung – Co-Captain  
Justin Zhang – Co-Captain

**PREPARATIONS:**

- Proper Safety materials
- Welding Curtains

---

# Lab Cleanup 1

**DATE:** 10/5/12

**LOCATION:** Kaprielian Hall  
Lab Basement

**ATTENDEES:** BOARD  
**MEMBERS:** 4  
**MEMBERS:** 3 **TOTAL:** 7

**REPORT PREPARED BY:**  
Erin Khan



## **DESCRIPTION OF**

**EVENT/PURPOSE:** Purpose of this event was to clean an area in the lab to make room for new materials and to have a clear workspace.

**ACTIVITY ASSESSMENT:** This activity was successful because a large amount of trash was bagged and cleared from the construction area. The old canoe from last year was broken into pieces for easier disposal. The old foam mold was also dismantled and placed into trash bags for removal. Another success through this event was the collaboration of four upperclassmen and three underclassmen. This reduced the age gap barrier between team members, and encouraged enhanced communication and coordination.

**SPEAKER/SPEAKER CONTACT INFO:** N/A

**PREPARATIONS:** Preparations included sending out email notifications of the event and acquiring trash bags, gloves, and masks to ensure proper clean up procedures.

**BUDGET:** No budget for this event.

---

# Paddling Practice 3

**DATE:** 10/7/12

**LOCATION:** Newport Aquatic Center

**ATTENDEES:** BOARD  
**MEMBERS:** 5  
**MEMBERS:** 3 **TOTAL:** 8

**REPORT PREPARED BY:** Erin Khan

**DESCRIPTION OF EVENT/PURPOSE:** Purpose of this event was to continue paddling practices to strengthen canoeing skills of the team into the semester.



**ACTIVITY ASSESSMENT:** This activity was successful since team members were consistently showing up to practice to improve. Furthermore, the team began to test out which paddlers would paddle together for the competition. Steering and strength skills were evaluated and improved for each paddler. One issue with this practice was that some members were unable to attend due to the early meeting time.

**SPEAKER/SPEAKER CONTACT INFO:** N/A

**PREPARATIONS:** Preparations included sending out email notifications of the event, collecting waiver forms for transportation, and bringing safety jackets for canoeing.

**BUDGET:** No budget for this event.

---

# Paddling Practice 4

**DATE:** 10/14/12

**LOCATION:** Newport Aquatic Center

**ATTENDEES:** BOARD MEMBERS: 4  
MEMBERS: 2 TOTAL: 6

**REPORT PREPARED BY:** Erin Khan

**DESCRIPTION OF EVENT/PURPOSE:** Purpose of this event was to continue paddling practices to strengthen canoeing skills of the team into the semester.

**ACTIVITY ASSESSMENT:** This activity was fairly successful since a majority of the team showed up to practice. However, attendance suffered due to a stressful midterm season. Despite these setbacks, practice was still productive, with the attending paddlers improving immensely in turning, endurance, and strength.

**SPEAKER/SPEAKER CONTACT INFO:** N/A

**PREPARATIONS:** Preparations included sending out email notifications of the event, collecting waiver forms for transportation, and bringing safety jackets for canoeing.

**BUDGET:** No budget for this event.

---

# Steel Shipment Relocation

**DATE:** 10/19/12

**LOCATION:** Kaprielian Hall

**ATTENDEES:** BOARD MEMBERS: 2  
MEMBERS: 2                      TOTAL:4

**REPORT PREPARED BY:** Thomas Palmieri

**DESCRIPTION OF EVENT/PURPOSE:**

- Move Steel shipment from loading bay to work bench

**ACTIVITY ASSESSMENT:**

- Enough members to move steel quickly and safely

**SPEAKER/SPEAKER CONTACT INFO:**

Thomas Palmieri – Co-Captain

Daniel Haung – Co-Captain

Justin Zhang – Co-Captain

**PREPARATIONS:**

Safety equipment for all participating members



---

## ASCE's 142<sup>nd</sup> Annual Conference

**DATE:** October 18-20, 2012

**LOCATION:** Montreal, Canada

**ATTENDEES:** BOARD MEMBERS: 6  
MEMBERS: 0      TOTAL: 6

**REPORT PREPARED BY:** Theresa Kurth



**DESCRIPTION OF ACTIVITY/PURPOSE:** Every year we try to send 4-6 very active members of our student chapter to National Conference and this year was no exception. The theme of the conference was “Civil Engineering in the New Global Economy,” something we have not had much experience with, outside of having a very diverse student body at USC. We were excited to learn more about this topic, as well as explore a new city and meet new friends and contacts.

**ACTIVITY ASSESSMENT:** Attending this conference was well worth the travel troubles it came with. All of us learned a lot and were inspired to become better civil engineers and more effective leaders. The opening session with David Lapin was particularly inspiring. I even bought his book! The innovative work going on with the San Francisco Bay Mega Tunneling Project was very fascinating to learn about. We also learned more about and discussed the nation’s Infrastructure Report Card, which really inspired all of us to start our work as civil engineers (and maybe politicians) to get things done. And we came away with many new friends, both from our own area and around the globe. Exploring the beautiful city of Montreal was also quite a treat.

---

# Mix Creation: Modified Escape

**DATE:** 10/28/12

**LOCATION:** Kaprielian Hall Lab  
Basement

**ATTENDEES:** BOARD MEMBERS: 2  
MEMBERS: 1 TOTAL: 3

**REPORT PREPARED BY:** Erin Khan

## **DESCRIPTION OF**

**EVENT/PURPOSE:** Purpose of this event was to initialize a mix design by using a slightly modified, basic design from past years.

**ACTIVITY ASSESSMENT:** This activity was successful since a good baseline mix design was formulated. This allowed the team a starting point to create the final mix based off of the mix design for the Escape. Furthermore, underclassmen were exposed to how a mix is created and what we do to test the strength of that design. A larger turnout would have been desired, and more frequent emails could have assisted in getting more interest for the event.

**SPEAKER/SPEAKER CONTACT INFO:** N/A

**PREPARATIONS:** Preparations included sending out email notifications of the event and deciding what mix design to use.

**BUDGET:** No budget for this event.



---

# Mix Creation: 3 New Mixes

**DATE:** 11/4/12

**LOCATION:** Kaprielian Hall  
Classroom and Lab Basement

**ATTENDEES:** BOARD  
**MEMBERS:** 2  
**MEMBERS:** 1 TOTAL: 3

**REPORT PREPARED BY:**  
Erin Khan



## **DESCRIPTION OF**

**EVENT/PURPOSE:** Purpose

of this event was to move forward with mix design for the canoe. New designs were desired in order to choose the best one for our needs.

**ACTIVITY ASSESSMENT:** This activity was successful since three new mixes were designed from our efforts. We named the mixes “Flubber”, “Shawtz”, and “Oobleck” to make them easier to track and remember. This event took place in two stages; the first stage was designing the actual ratios and amounts of the mixes in the classroom. The second stage was actually creating what we had designed earlier. As the last event, a higher turnout would have been ideal. Making mix design a more exciting event could help gain interest for these types of activities.

**SPEAKER/SPEAKER CONTACT INFO:** N/A

**PREPARATIONS:** Preparations included sending out email notifications of the event and deciding what mix design to use.

**BUDGET:** No budget for this event.



---

# Mix Testing

**DATE:** 11/5/12

**LOCATION:** Kaprielian Hall Lab  
Basement

**ATTENDEES:** BOARD MEMBERS: 2  
MEMBERS: 2 TOTAL: 4

**REPORT PREPARED BY:** Erin Khan

## **DESCRIPTION OF**

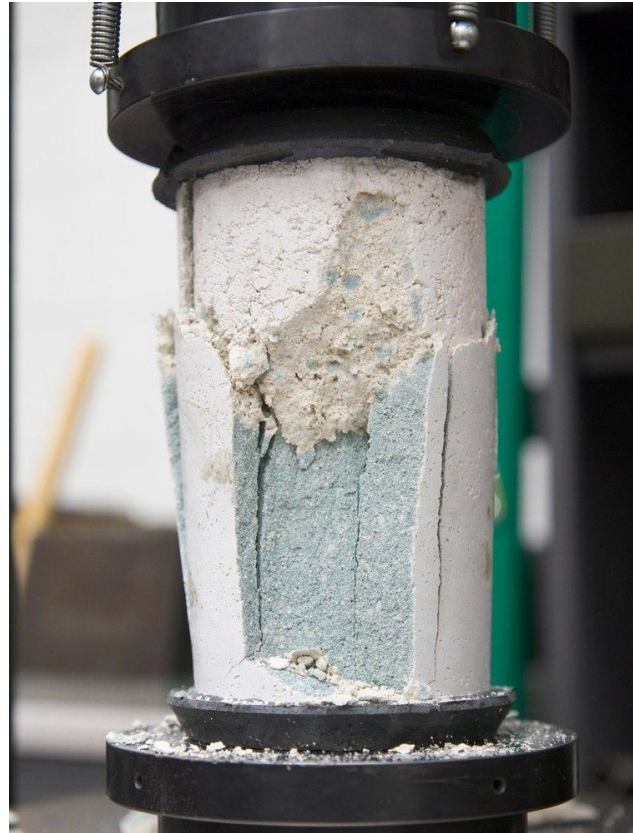
**EVENT/PURPOSE:** Purpose of this event was to test the first mix design we created – the modified Escape mix. The team focused largely on finding a suitable mix for competition.

**ACTIVITY ASSESSMENT:** This activity was very successful since we saw how strong our first baseline mix was. It had a compressive strength of ~1000 psi. As a team, we noted very strange irregularities within the concrete as revealed by the compression test. The modified Escape mix had a strange two toned color to it, and we decided to try out new mixes for the canoe. Furthermore, more underclassmen attended this event, and gained knowledge of concrete testing.

**SPEAKER/SPEAKER CONTACT INFO:** N/A

**PREPARATIONS:** Preparations included sending out email notifications of the event and coordinating with Mr. Lance Hill (KAP lab manager) for use of the testing machine.

**BUDGET:** No budget for this event.



---

# Mix Design & Creation: More Mixes

**DATE:** 11/11/12

**LOCATION:** Kaprielian Hall  
Classroom and Lab Basement

**ATTENDEES:** BOARD  
MEMBERS: 3  
MEMBERS: 3 TOTAL: 3

**REPORT PREPARED BY:**  
Erin Khan

## **DESCRIPTION OF**

**EVENT/PURPOSE:** Purpose of this event was to improve and experiment with more mix designs. Upperclassmen officers

collaborated their experience and knowledge to make different designs that could potentially work for the canoe.



**ACTIVITY ASSESSMENT:** This activity was successful since two new mixes, named “The Hulk” and “The Thing” were created. They had a very atypical consistency where they were extremely hard and compact while immobile, but while being compacted into cylinders turned to a liquid consistency. One problem with the event was lack of turnout of underclassmen, which could be remedied by making sure to have at least one underclassman attend.

**SPEAKER/SPEAKER CONTACT INFO:** N/A

**PREPARATIONS:** Preparations included sending out email notifications of the event and deciding what mix design to use.

**BUDGET:** No budget for this event.

---

# EVENT TITLE: Discover USC / Engineering Expo

**DATE:** November 13, 2012

**LOCATION:** USC Campus

**ATTENDEES:** BOARD MEMBERS: 5

MEMBERS: 5                      TOTAL: 10

## **DESCRIPTION OF**

**EVENT/PURPOSE:** Discover USC/ Engineering Expo is event hosted every semester in order to inform potential students about USC, the Viterbi School of Engineering and our organization. This event aims to attract as many students as possible to consider USC. Furthermore, the parents accompanying the students also have the opportunity to become informed. The most beneficial part of the event is due to the fact that the college students are the ones who get to speak to the potential students and parents so that the parents and the potential students really get a feel for what USC is about.



**SUCSESSES/PROBLEMS:** The event was very successful. We were able to meet plenty of potential students and their parents. We even had the opportunity to see some of those students again for other events which helped keep in contact with them in case they considered USC.

**SPEAKER/SPEAKER CONTACT INFO:** None

**PREPARATIONS:** Our preparations consisted of having information on our organization and having a poster board to best display what USC ASCE is about.

**BUDGET:** None

---

# 2<sup>nd</sup> General Meeting

## With Jackie Patterson

**DATE:** November 15, 2012

**LOCATION:** KAP 158

**ATTENDEES:** BOARD MEMBERS: 5  
MEMBERS: 20 TOTAL: 25

**REPORT PREPARED BY:**  
Theresa Kurth

### **DESCRIPTION OF**

**ACTIVITY/PURPOSE:** Jackie Patterson, founder of JL Patterson & Associates, Inc, comes almost every year to speak to our student chapter. This year, she spoke about the many big projects her firm has been fortunate to work on and how to make a small business a success. JL Patterson & Associates is involved in all types of rail projects – from Light and Heavy Rail to projects with DOTs and Municipalities. Jackie started the company by herself in 1990 and it has grown to be a top civil engineering firm. In 2011, it was voted “Best Civil Engineering Firm to Work For.” Jackie’s success story is very inspirational to our student chapter.



**ACTIVITY ASSESSMENT:** Jackie always puts on a good presentation and this time was no exception. The audience was on the edge of their seats listening to her project descriptions and I have no doubt at least a couple of them walked out hoping to work for Jackie one day. We will definitely continue having Jackie come to speak to our student chapter.

**SPEAKER/SPEAKER CONTACT INFO:** Jackie Patterson –  
jlpatterson@jlpatterson.com

**PREPARATIONS:** Finding a room, ordering food, contacting Jackie, buying a parking pass for Jackie

**BUDGET:** \$140 for food, \$10 for parking pass

---

# Home Depot Trip: Materials Acquisition

**DATE:** 11/18/12

**LOCATION:** Home Depot

**ATTENDEES:** BOARD  
**MEMBERS:** 3  
**MEMBERS:** 3 **TOTAL:** 4

**REPORT PREPARED BY:** Erin  
Khan



**DESCRIPTION OF EVENT/PURPOSE:** Purpose of this event was purchase materials needed for canoe construction early on instead of doing paddling practice. The tradition of having lunch afterwards was still maintained after we went to home depot.

**ACTIVITY ASSESSMENT:** This activity was extremely successful since we got a head start on acquiring materials needed for the canoe construction. Furthermore, important safety materials such as gloves and masks were replenished. Team bonding also occurred through a group lunch afterwards, and started discussion about aesthetic design ideas for the canoe. It was decided that a general “SC” theme would be appropriate, since USC is one of the schools hosting the upcoming PSWC competition.

**SPEAKER/SPEAKER CONTACT INFO:** N/A

**PREPARATIONS:** Preparations included sending out email notifications of the event, collecting transportation waivers, and ensuring captains could attend to purchase materials.

**BUDGET:** No budget for this event.

---

## Attachment E



## Special Projects Report

---

# TreePeople Community Service

**DATE:** 2/11/12

**LOCATION:** Coldwater Canyon Park

**ATTENDEES:** BOARD MEMBERS: 3  
MEMBERS: 4      TOTAL: 6

**REPORT PREPARED BY:**  
Oscar Rivera

## **DESCRIPTION OF EVENT/PURPOSE:**

The purpose of this event was to be good citizens and give back to the community and environment through service.

**ACTIVITY ASSESSMENT:** Through the organization, TreePeople, USC ASCE members helped plant trees, mulch, pull weeds, and clean up a very beautiful park in Los Angeles that millions of people visit every year. This was the first of many more community service events to come this year.



---

## Attachment F



## Financial Statement



---

---

**ATTACHMENT F – FINANCIAL STATEMENT SUMMARY**

**INCOME**

<b>1. Local Membership Dues</b>		
Spring 2012	(7 members @ \$30/member)	<u>\$210</u>
Fall 2012	(3 members @ \$30/member)	<u>\$90</u>
Fall 2012	PSWC Fees	<u>\$1915</u>
<b>2. Allocation from University</b>		<u>\$743.00</u>
Any allocations from the University were handled by USC and the funds never released directly to our organization		
<b>3. Donations from sponsors</b>		
Viterbi School of Engineering		<u>\$3250</u>
Sonny Astani Department of Civil and Environmental Engineering		<u>\$1250</u>
David M. Wilson Affiliates, Los Angeles, CA		<u>\$1000</u>
<b>4. Other Fundraisers</b>		
N/A		<u>N/A</u>
<b>Total Income:</b>		<b><u>\$8458.00</u></b>

**EXPENSES**

<b>1. Professional Meetings</b>		
Food and Beverages		<u>\$743.00</u>
Printing		<u>N/A</u>
<b>2. Attendance at WSCL</b>		
Airfare/mileage		<u>N/A</u>
Lodging		<u>N/A</u>
Food		<u>N/A</u>
<b>3. Competitions</b>		
Competition: PSWC		
U-Haul Rental		<u>\$147.00</u>
<b>4. Conference Participation - PSWC</b>		
Registration (42 students @ \$95/ student):		<u>\$4085</u>
School Registration		<u>\$100.00</u>
Airfare/Mileage		<u>N/A</u>
Lodging		<u>\$3176</u>
<b>7. Special Projects</b>		
USCASCE.com Domain Renewal		<u>24.95</u>
<b>Total Expenses:</b>		<b><u>\$8275.95</u></b>

**Cash Balance (Income – Expenses): \$ 182.00**

**Accounts Payable** N/A

**Accounts Receivable** \$300