

Violin I

Brandenburg Concerto No. 3

for string quartet

Johann Sebastian Bach

Arr. Nick Halsey

♩ = 96

5

10

15

17

20

25

30

31

35

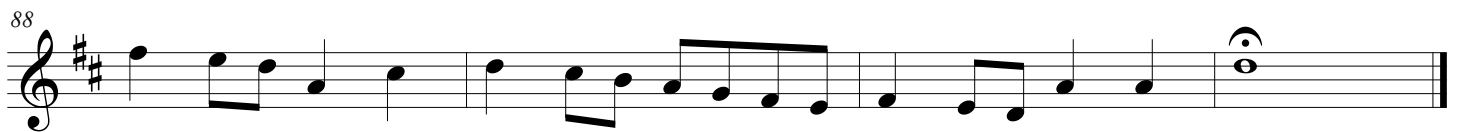
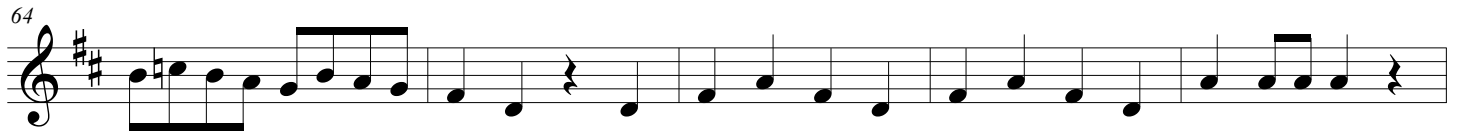
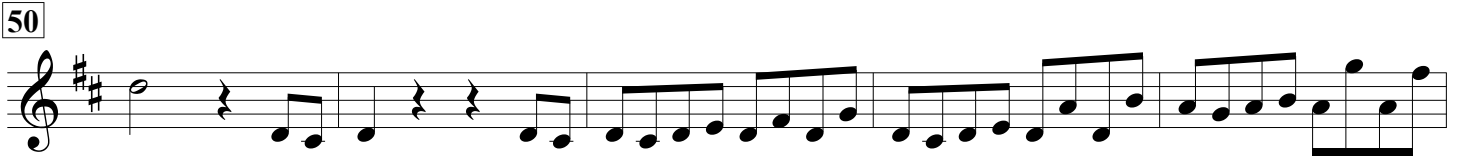
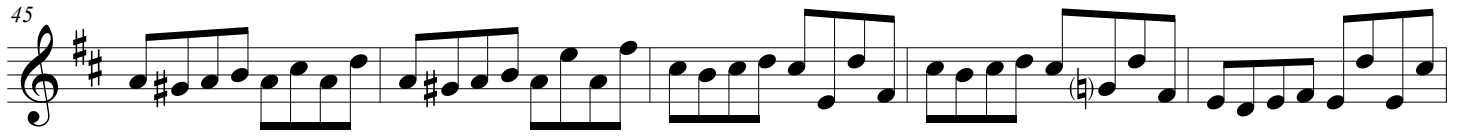
39

40

© 2013 Nick Halsey

Adapted from edition for cello quartet: <https://celloexpressions.com/music/piece/brandenburg-concerto-no-3/>

Brandenburg Concerto No. 3



Violin II

Brandenburg Concerto No. 3

for string quartet

Johann Sebastian Bach

Arr. Nick Halsey

$\text{♩} = 96$

5

10

15

17

20

25

31

36

39

41

© 2013 Nick Halsey

Adapted from edition for cello quartet: <https://celloexpressions.com/music/piece/brandenburg-concerto-no-3/>

Brandenburg Concerto No. 3

47 50

52

57 61

62

67

72

77 78

81

87

Viola

Brandenburg Concerto No. 3

for string quartet

Johann Sebastian Bach

Arr. Nick Halsey

♩ = 96

6

12

17

22

27

31

32

37

39

42

Detailed description: This image shows the musical score for the Viola part of the Brandenburg Concerto No. 3 by Johann Sebastian Bach, arranged by Nick Halsey. The score is written in G major (one sharp) and 3/4 time. It begins with a tempo marking of quarter note = 96. The music is arranged in systems of staves, with measure numbers 6, 12, 17, 22, 27, 31, 32, 37, 39, and 42 indicated at the start of their respective lines. The notation includes various rhythmic values such as quarter notes, eighth notes, and sixteenth notes, along with rests and accidentals. The score is presented in a clean, black-and-white format.

© 2013 Nick Halsey

Adapted from edition for cello quartet: <https://celloexpressions.com/music/piece/brandenburg-concerto-no-3/>

Brandenburg Concerto No. 3

48

50

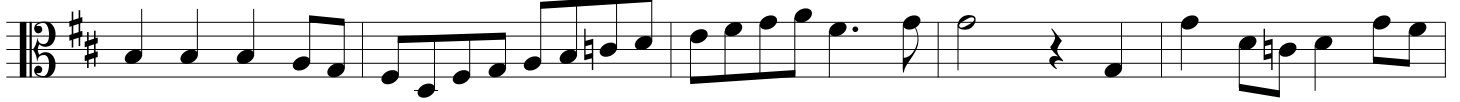


53



58

61



63

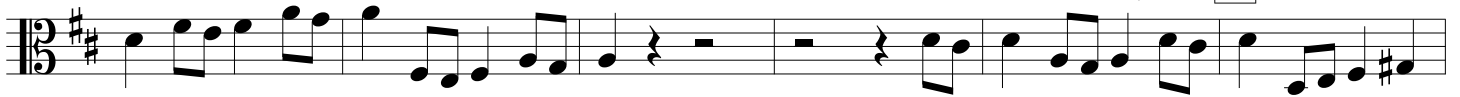


68



73

78



79



84



88



Cello

Brandenburg Concerto No. 3

for string quartet

Johann Sebastian Bach

Arr. Nick Halsey

$\text{♩} = 96$



6



11



17



23



28

31



33



39



Brandenburg Concerto No. 3

45



50



55



60

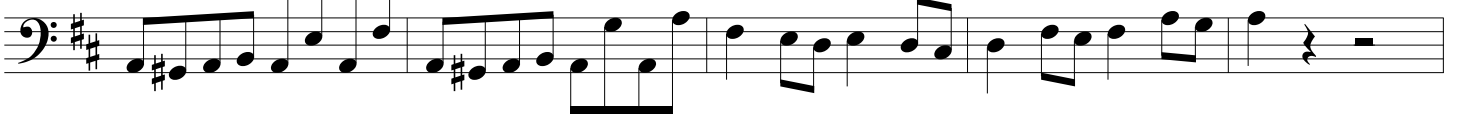
61



65



70



75

78



81



86

